

高松高校応援歌

天に二つの

Musical score for '天に二つの' (Ten ni Futatsu no). The score is written in treble clef with a key signature of one flat (B-flat major). It begins with a dynamic marking of *f* (forte). The piece consists of several measures, including a repeat sign with first and second endings. The first ending leads back to an earlier part of the piece, while the second ending concludes with a fermata.

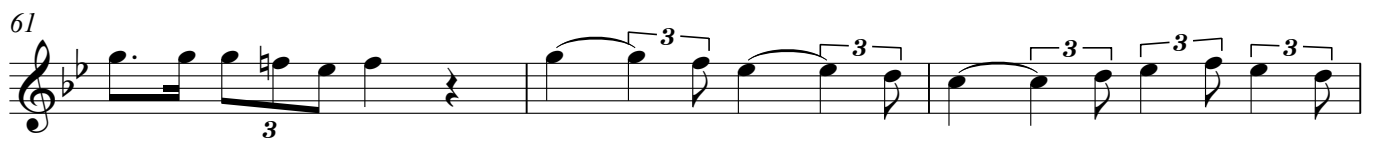
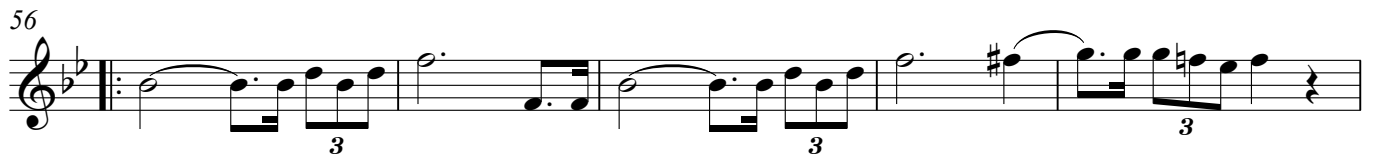
高高 高高

Musical score for '高高 高高' (Takatake Takatake). The score is written in treble clef with a 4/4 time signature and a key signature of one flat. It begins with a dynamic marking of *f*. The piece features a rhythmic pattern of eighth and sixteenth notes, with a repeat sign and first/second endings at the end.

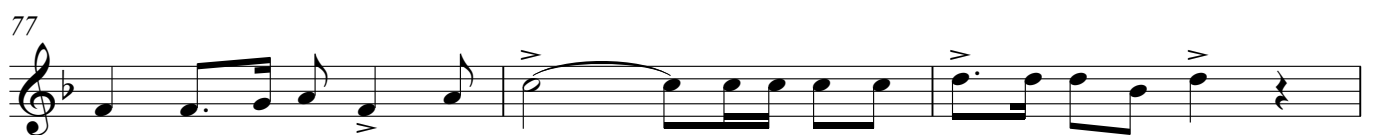
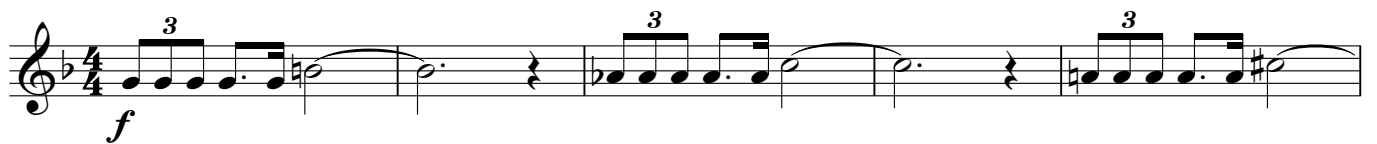
お玉杓子

Musical score for 'お玉杓子' (Otamagoshi). The score is written in treble clef with a 4/4 time signature and a key signature of one flat. It begins with a dynamic marking of *f* and includes a triplet notation (three eighth notes beamed together). The piece concludes with a repeat sign and first/second endings.

コンバット マーチ



DASH! 高高



Knock Out March

sempre f

91

99

107

115

123

129

fff